



# LUDRE TEST MEASUREMENT AND QUALITY CONTROL SOFTWARE

LUDRE YAZILIM

<https://www.ludre.com.tr/>

UPDATE: MARCH, 2023

---

## Ring Light K186

---

### 1.FEATURES

- Lighting Color: 4000K, 6000K, UV 370 nm, UV 390 nm
- Lighting Angle: 15°, 30°, 60°
- Intensity of Illumination: 2.88 k lm
- Number of Leds: 18
- Input Voltage: 24 V
- Input Current (15  $\mu$ s): 4 Amp
- Input Current (1 second): 2.8 Amp
- Input Current (1 minute): 1.4 Amp
- Input Current (continuous): 1 Amp
- Dimensions: 13 cm x 13 cm x 5 cm
- Constant Voltage Usage: Yes
- Diffuser Option: None

### 2.DESCRPTIONS

- Ring light illuminations contain various options suitable for projects with different angles and color options. It is used in all areas where there is a camera and used in the field of artificial image processing. however, it is preferred in machine lighting and used in special machine lighting.

### 3.APPLICATIONS

- Engine Part Inspections
- Packaging Inspections
- Medical Bottle Inspections
- Food Package Inspections
- Surface Inspections
- Microscopic Camera Applications
- Particle Imaging in Liquid
- Particle Size Measurement
- Particle Counting
- Particle Identification
- Microscopic Camera Applications
- Cell Imaging
- Machine Monitoring
- Image Processing
- Cell counting
- Cell Identification
- Flame Length Measurement
- Edge Detection
- Material Strain Measurement (elongation / shortening / degradation)
- Motion Detection
- Product Counting
- Color Concentration Information
- Coordinate Information
- Velocity Measurement
- Obtaining Information such as Product Shape
- Volume, Faulty Product Elimination



# LUDRE TEST MEASUREMENT AND QUALITY CONTROL SOFTWARE

LUDRE YAZILIM

<https://www.ludre.com.tr/>

UPDATE: MARCH, 2023

- Industrial Led Lighting
- Conveyor Line Lighting
- Robot Vision Applications
- Industry 4.0 Applications
- Machine Lighting
- Bar Light
- Dark Field Light
- Panel Lighting
- Dark Effect Lighting
- Machine Vision
- Test and Measurement
- Dome Light
- Ring Light
- Panel Light
- Back Light
- Dome Type
- Lighting
- Ring Lighting



**Figure 1.** Ring Light K186

**Table 1.** Ring Light K186 Dimensions

Product Name	Dimensions
Ring Light K186	Width: 145 mm
	Height: 40 mm
	Length: 145 mm



# LUDRE TEST MEASUREMENT AND QUALITY CONTROL SOFTWARE

LUDRE YAZILIM

<https://www.ludre.com.tr/>

UPDATE: MARCH, 2023

---

## Contents

1.FEATURES.....	1
2.DESCRPTIONS.....	1
3.APPLICATIONS.....	1
4.DIMENSINONS.....	4
5.DOCUMENTS.....	7



# LUDRE TEST MEASUREMENT AND QUALITY CONTROL SOFTWARE

LUDRE YAZILIM

<https://www.ludre.com.tr/>

UPDATE: MARCH, 2023

## 4.DIMENSIONS

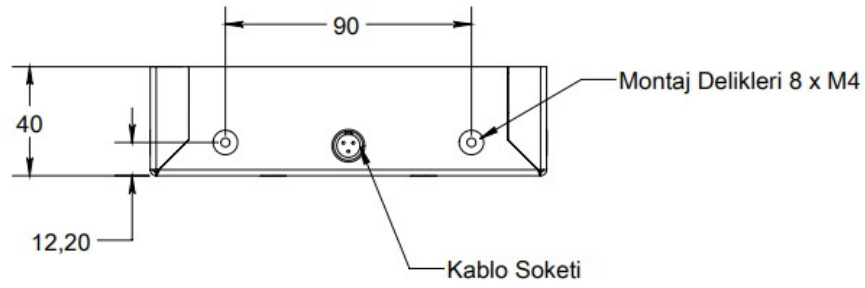


Figure 2. Mounting Holes&Socket Hole

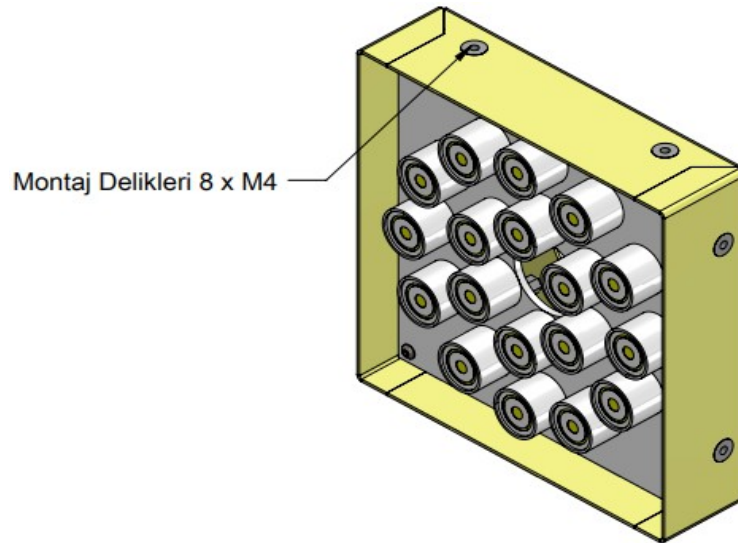


Figure 3. 3D Modeling



# LUDRE TEST MEASUREMENT AND QUALITY CONTROL SOFTWARE

LUDRE YAZILIM

<https://www.ludre.com.tr/>

UPDATE: MARCH, 2023

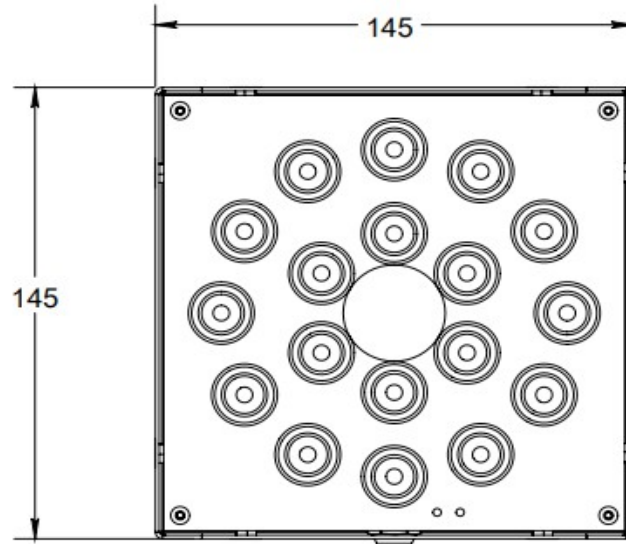


Figure 4. Width Length Measure

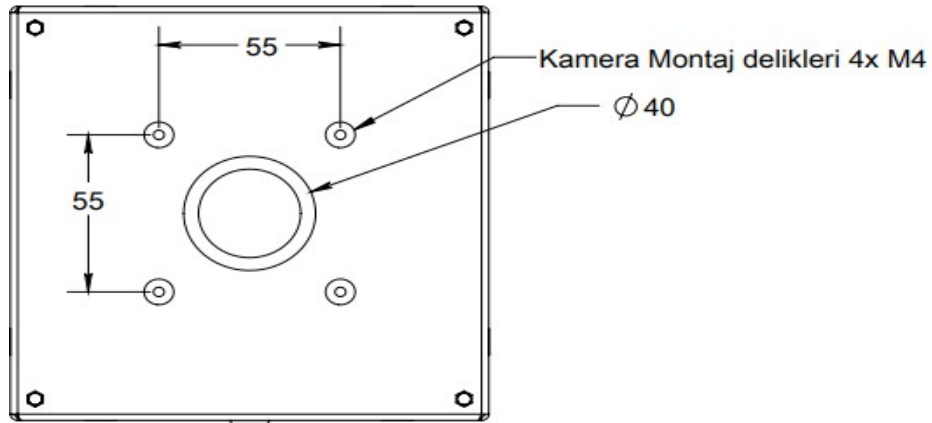


Figure 5. Camera Mounting Holes



# LUDRE TEST MEASUREMENT AND QUALITY CONTROL SOFTWARE

LUDRE YAZILIM

<https://www.ludre.com.tr/>

UPDATE: MARCH, 2023

ÖĞE NO.	PARÇA NUMARASI	TANIM	MİKT.
1	140 x 140 Kasa	1.2mm DKP Sac	1
3	PEM BSO-M3.5-20 ZI--N	M3 x 20 distans	4
6	M4-SK-Y6G	M4 Somun Perçin (Sıfır Kafa )	12

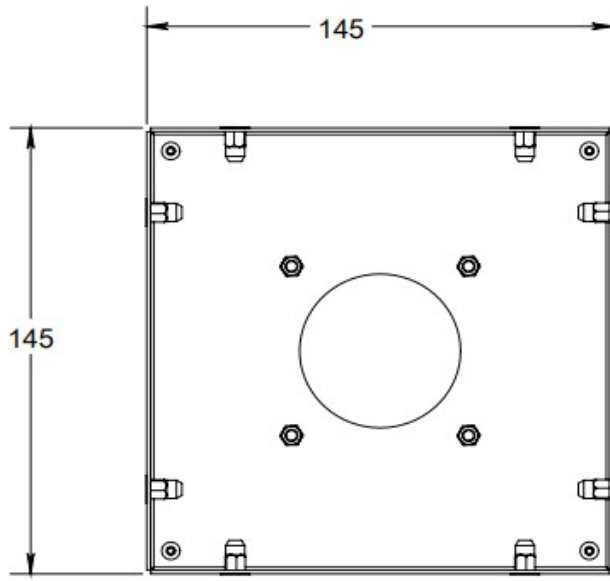


Figure 6. Side Mount Rivets

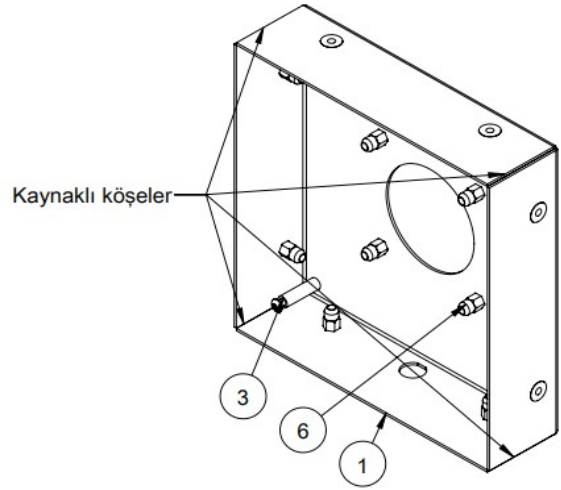


Figure 7. Part Numbers

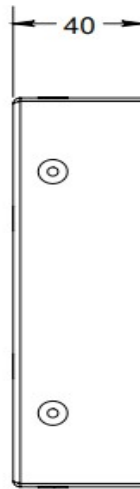


Figure 8. Height Measure



# LUDRE TEST MEASUREMENT AND QUALITY CONTROL SOFTWARE

LUDRE YAZILIM

<https://www.ludre.com.tr/>

UPDATE: MARCH, 2023

---

## 5.DOCUMENTS

<https://www.ludre.com.tr/ring-light-k186/59>

Our ringlights are used for shadow-free illumination of the objects examined.

They ensure symmetrical light around the camera lens and are used for surface and outline detection.

They are available with various beam angles, in all application-relevant color temperatures and with installed diffusers.

Ring Lights with switchable constant light are suited for operation from a 24 VDC voltage source.

They offer a constant light intensity over a wide voltage range and are distinguished by features such as trigger inversion and brightness adjustment.

Ring Lights are essential for lighting specular or diffused surfaces. Our Ring Lights are built with high density LEDs that create bright illumination of surfaces for a wide spectrum of Machine Vision inspection purposes.