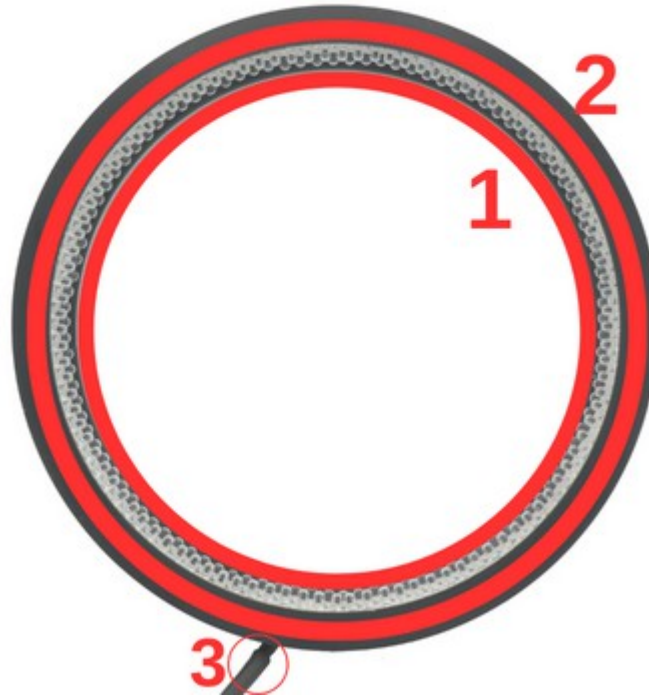




Prion Industrial Lighting

Dark Field(Low Angle)

DFL150-7.5



Product Name	Dimensions	Number	Statement
DFL150-7.5	Rmin:139mm	1	Camera Field of View
	Rmax:170mm	2	Lighting Zone
	Heigh: 27mm	3	Product Cable



Pelin Street, Nuhoglu Stage 2
Kadiköy/İstanbul/Turkey

E-Mail: info@ludre.com.tr
Contact: +90 216 519 08 54



Prion Industrial Lighting

Dark Field(Low Angle)

DFL150-7.5

1.FEATURES

- Illumination Color: Green, 6000K
- Illumination Angle: 25°
- Illumination Slope: 7.5°
- Number of Leds: 252
- Input Voltage: 24 V
- Input Current (15 μ s): 1 Amp
- Input Current (1 second): 0,72 Amp
- Input Current (1 minute): 0,43 Amp
- Input Current (continuous): 0,43 Amp
- Case Dimensions: Rmin= 13.9 cm, Rmax= 17 cm, h= 2.7 cm
- Constant Voltage Usage: Yes
- Diffuser Option: No

3.APPLICATIONS

- Engine Part Inspections
- Packaging Inspections
- Medical Bottle Inspections
- Food Package Inspections
- Surface Inspections
- Microscopic Camera Applications
- Particle Imaging in Liquid
- Particle Size Measurement
- Particle Counting
- Machine Vision
- Cell Identification
- Flame Length Measurement
- Edge Detection
- Material Strain Measurement (elongation / shortening / degradation)
- Motion Detection
- Product Counting
- Color Concentration Information
- Coordinate Information

2.DESCRPTIONS

- Dark Field illumination is a specialized lighting technique used in image processing projects. In this method, light is directed at a certain angle to emphasize objects against a typically dark background. Dark Field illumination can offer various advantages when employed in specific applications.

- Particle Identification
- Cell Imaging
- Machine Monitoring
- Image Processing
- Industrial Led Lighting
- Conveyor Line Lighting
- Robot Vision Applications
- Industry 4.0 Applications
- Machine Lighting
- Bar Light
- Dark Field Light
- Panel Lighting
- Dark Effect Lighting
- Dome Light
- Ring Light
- Panel Light
- Back Light
- Dome Type
- Lighting



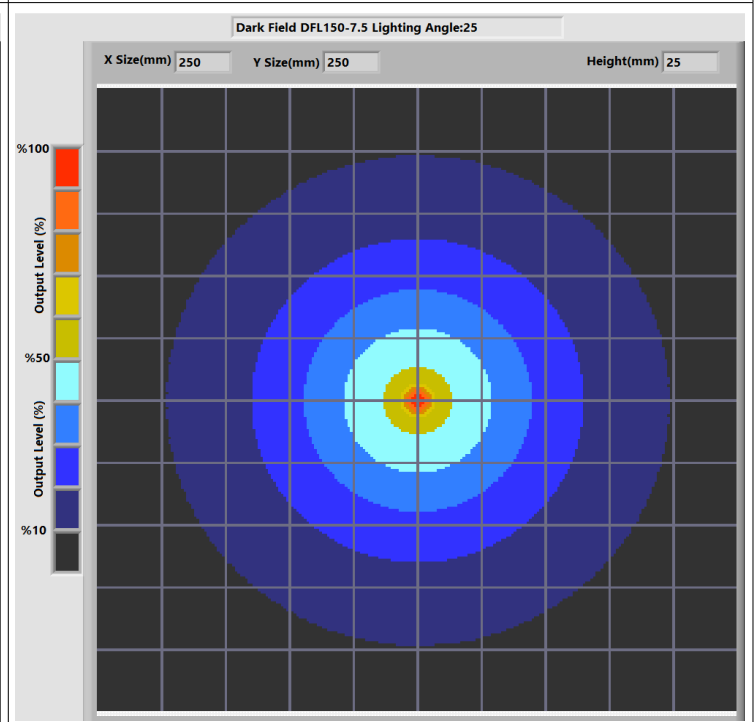
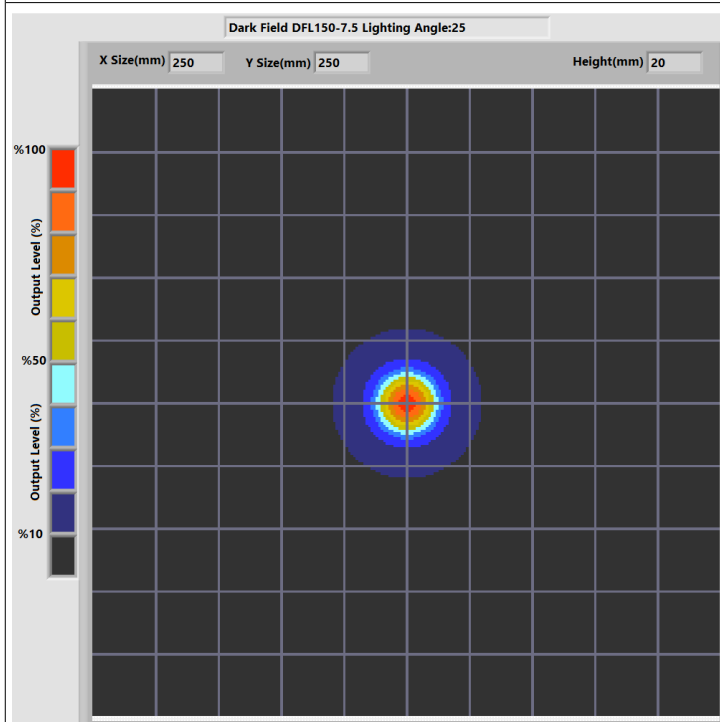
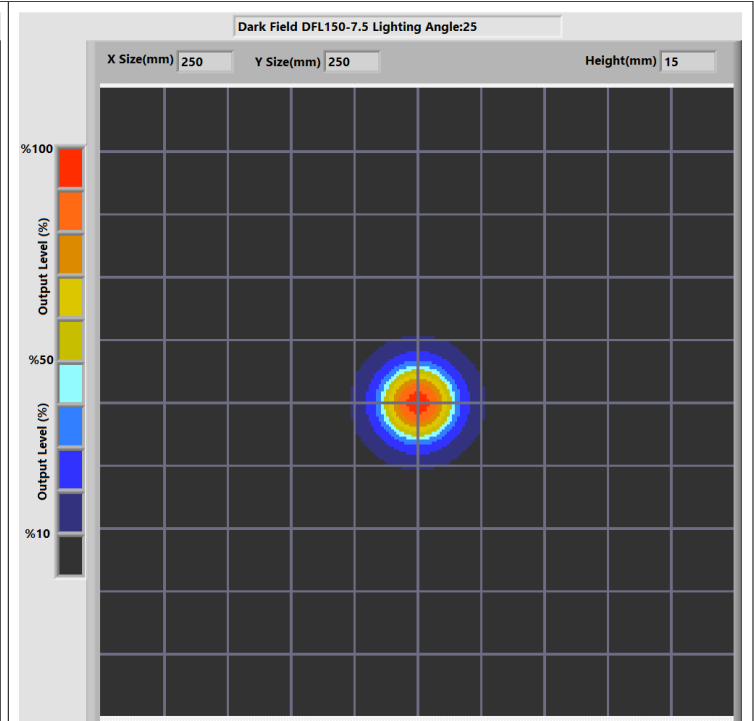
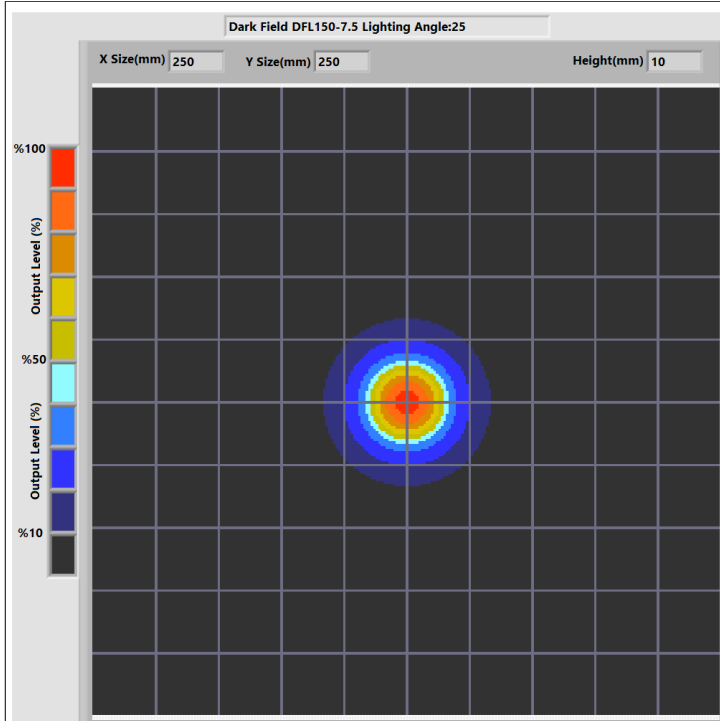


Prion Industrial Lighting

Dark Field(Low Angle)

DFL150-7.5

4.LIGHT CHARACTERISTICS

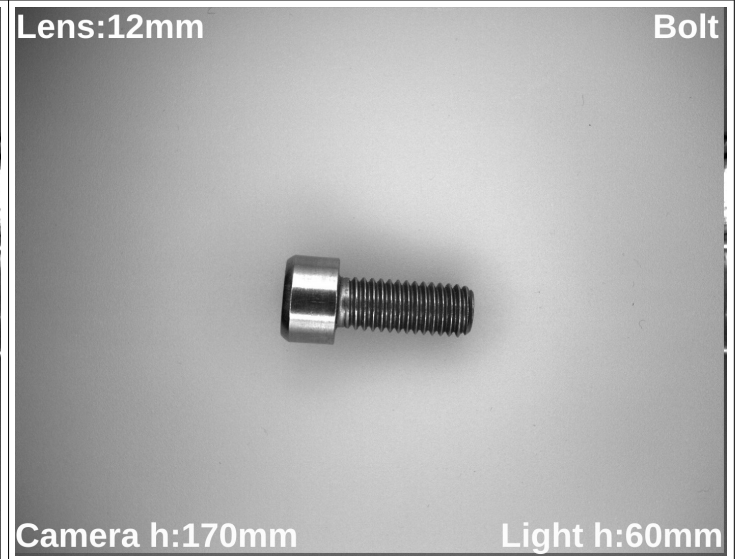
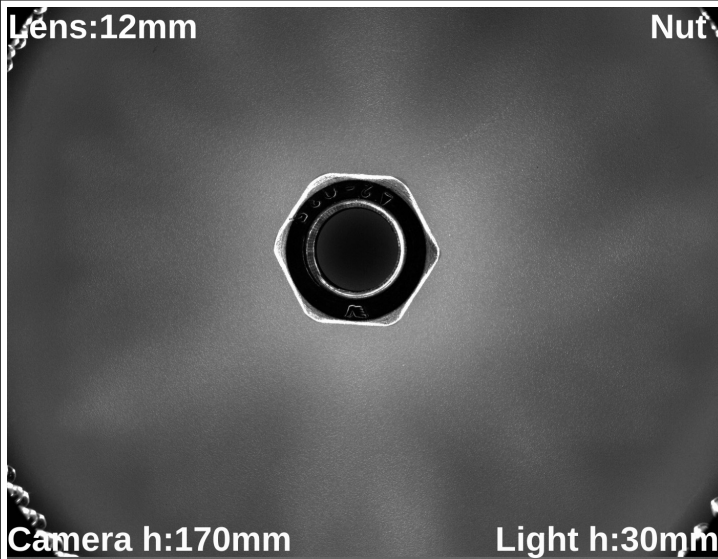
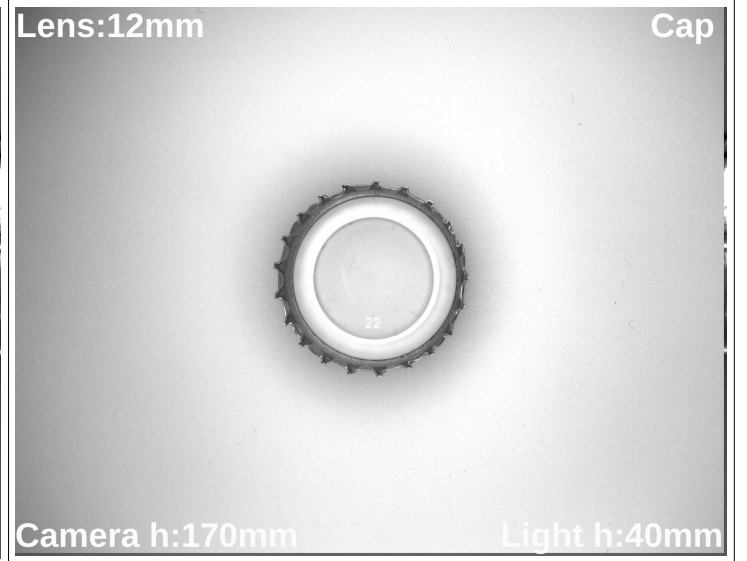
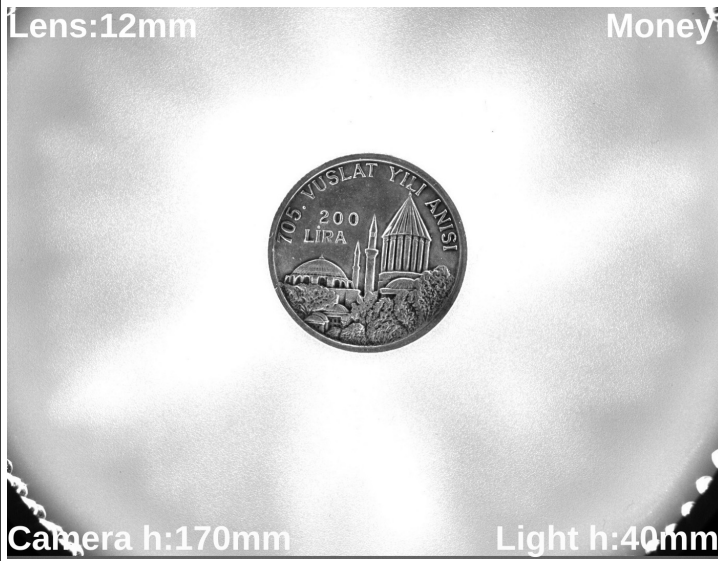




Prion Industrial Lighting

Dark Field(Low Angle)

DFL150-7.5

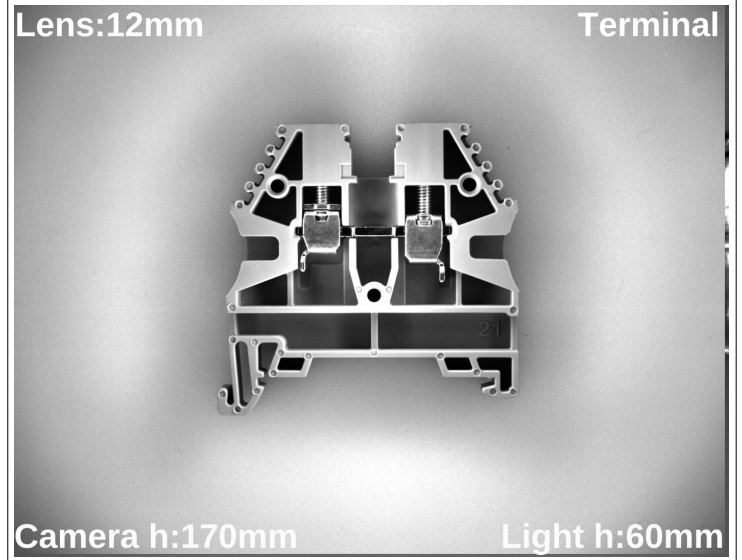
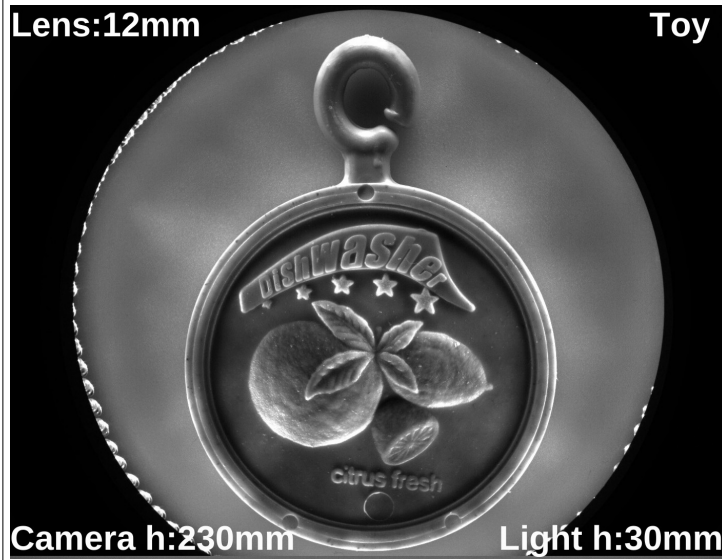
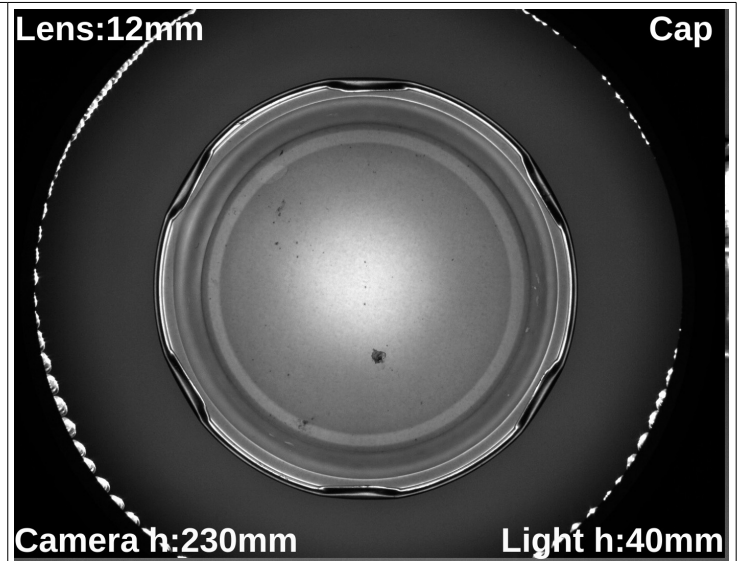




Prion Industrial Lighting

Dark Field(Low Angle)

DFL150-7.5



Pelin Street, Nuhoğlu Stage 2
Kadıköy/İstanbul/Turkey

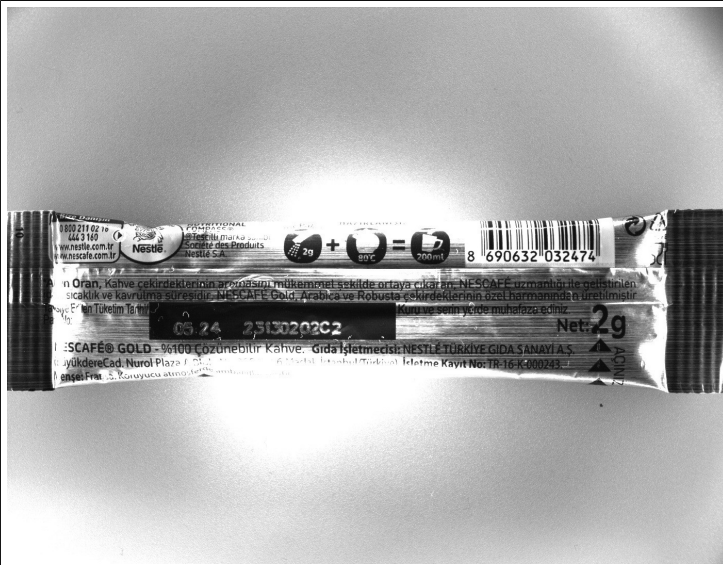
E-Mail: info@ludre.com.tr
Contact: +90 216 519 08 54



Prion Industrial Lighting

Dark Field(Low Angle)

DFL150-7.5



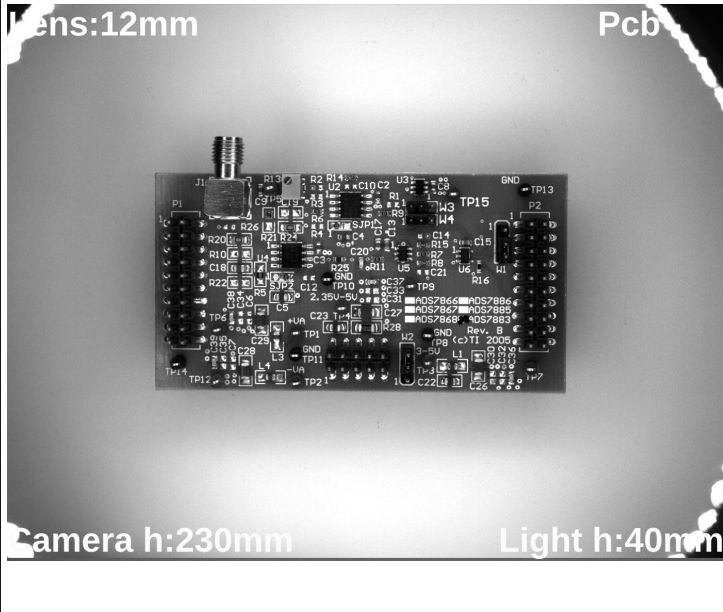
Lens:12mm

Box



Camera h:230mm

Light h:40mm



Lens:12mm

Pcb

Camera h:230mm

Light h:40mm



Pelin Street, Nuhoğlu Stage 2
Kadıköy/İstanbul/Turkey

E-Mail: info@ludre.com.tr
Contact: +90 216 519 08 54



Prion Industrial Lighting

Dark Field(Low Angle)

DFL150-7.5

5.PRODUCT USE



Mounting to the machines is possible with the bolt and nut assembly in the areas indicated in the adjacent image.

The points to be taken into consideration during this installation are as follows: The electronic parts should not be contacted while assembling the product.

In addition, if the product is not installed properly, vibrations that may occur will cause errors during measurement and control.



The product is powered by a 2M long cable fixed on it.

We need to make the 24V DC+ connection from our cable line with a red stripe, and we need to make the GND connection from our single color cable line.

When the supplies are connected in reverse, the product will not be damaged, but the product will not work. Cuts, breaks, etc. on the cable. If there is a problem, please contact us before using the product.





Prion Industrial Lighting

Dark Field(Low Angle)

DFL150-7.5

6.DIMENSIONS

DFL150-7.5

