

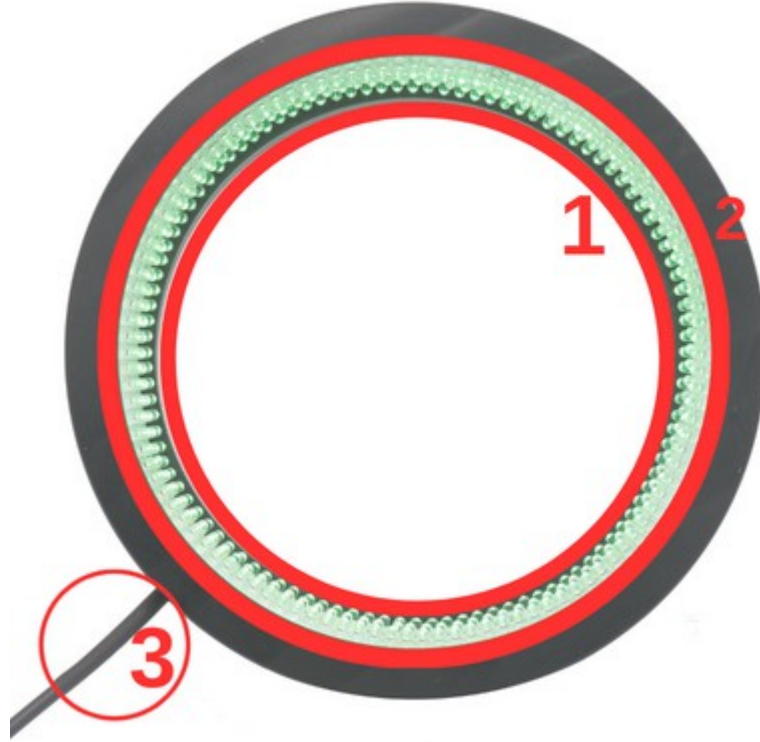


# Prion Industrial Lighting

## Dark Field Lights

## Low Angle Lights

### DFL150-15



Product Name	Dimensions	Number	Statement
DFL150-15	Rmin:130mm	1	Camera Field of View
	Rmax:176mm	2	Lighting Zone
	Heigh: 32mm	3	Product Cable





# Prion Industrial Lighting

## Dark Field Lights

## Low Angle Lights

DFL150-15

### 1.FEATURES

- Illumination Color: Green, 6000K
- Illumination Angle: 25°
- Illumination Slope: 15°
- Number of Leds: 329
- Input Voltage: 24 V
- Input Current (15  $\mu$ s): 0,70 A
- Input Current ( 1 second): 0,44 A
- Input Current (1 minute): 0,36 A
- Input Current (continuous): 0,28 A
- Case Dimensions: Rmin= 13 cm, Rmax= 17.6 cm, h= 3.2 cm
- Constant Voltage Usage: Yes
- Diffuser Option: No

### 3.APPLICATIONS

- Engine Part Inspections
- Packaging Inspections
- Medical Bottle Inspections
- Food Package Inspections
- Surface Inspections
- Microscopic Camera Applications
- Particle Imaging in Liquid
- Particle Size Measurement
- Particle Counting
- Machine Vision
- Cell Identification
- Flame Length Measurement
- Edge Detection
- Material Strain Measurement (elongation / shortening / degradation)
- Motion Detection
- Product Counting
- Color Concentration Information
- Coordinate Information

### 2.DESCRPTIONS

- Dark Field light illuminations contain various options suitable for projects with different angles and color options.

- Particle Identification
- Cell Imaging
- Machine Monitoring
- Image Processing
- Industrial Led Lighting
- Conveyor Line Lighting
- Robot Vision Applications
- Industry 4.0 Applications
- Machine Lighting
- Bar Light
- Dark Field Light
- Panel Lighting
- Dark Effect Lighting
- Dome Light
- Ring Light
- Panel Light
- Back Light
- Dome Type
- Lighting





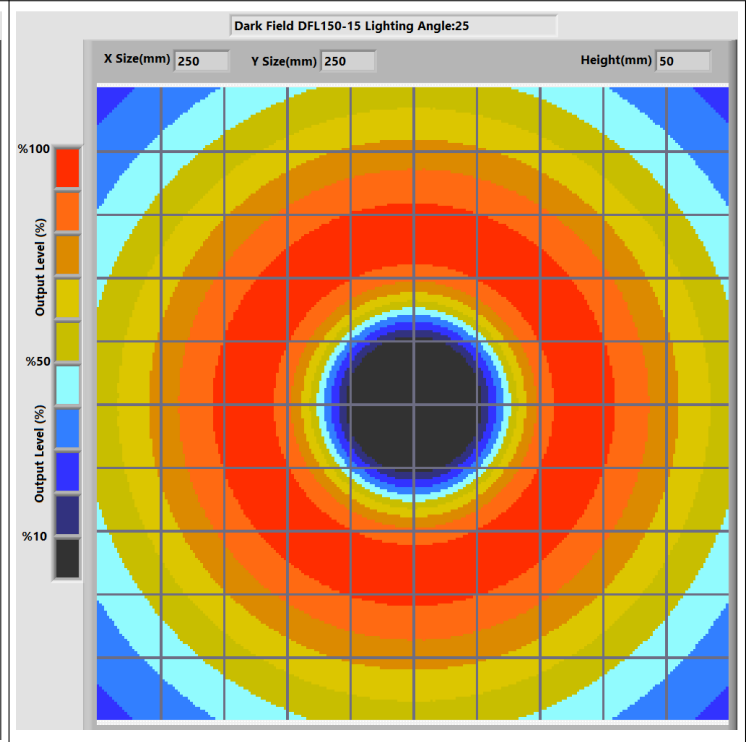
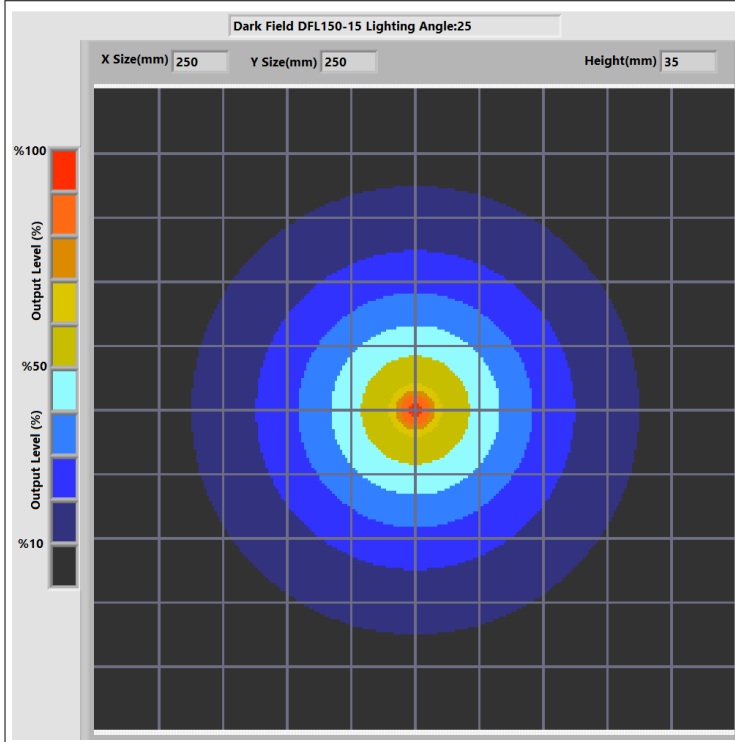
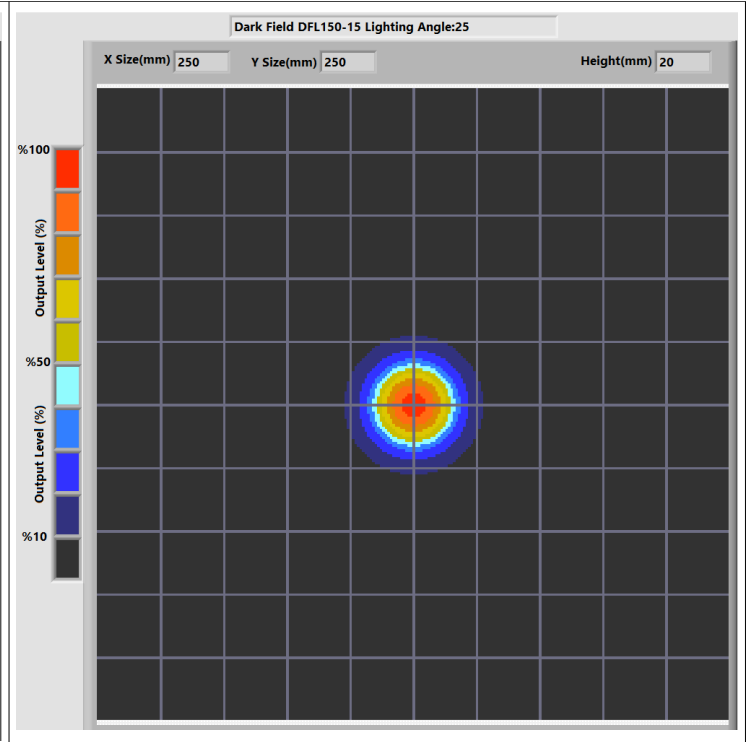
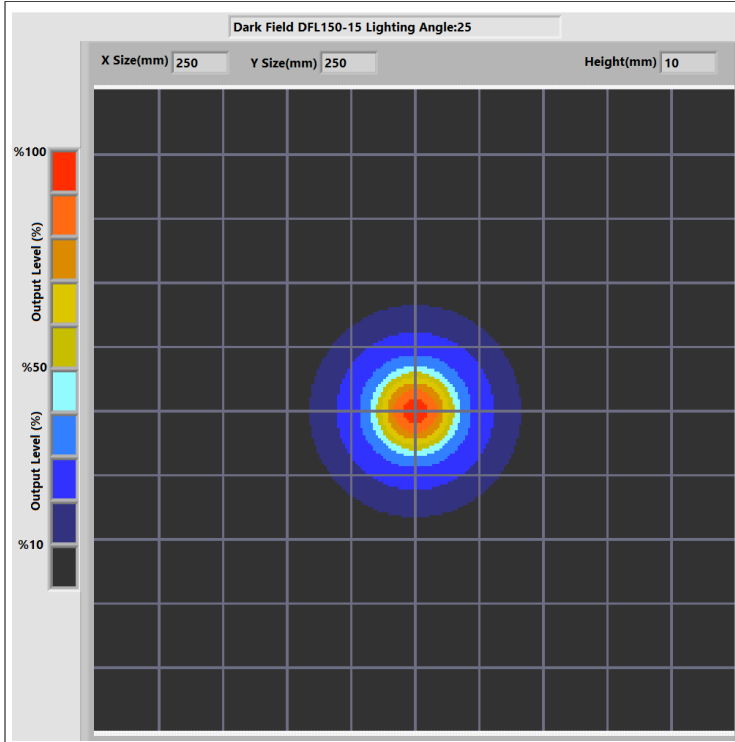
# Prion Industrial Lighting

## Dark Field Lights

### Low Angle Lights

DFL150-15

#### 4.LIGHT CHARACTERISTICS



Dumlupınar Mahallesi, Pelin Sok. Nuhoglu 2.  
Etap B Blok No:51 D16-19 Kadıköy / İstanbul

E-Mail: [info@ludre.com.tr](mailto:info@ludre.com.tr)  
Contact: +90 216 519 08 54





# Prion Industrial Lighting

Dark Field Lights

Low Angle Lights

DFL150-15

Lens:12mm

Money

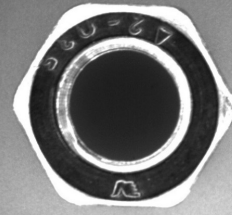


Camera h:130mm

Light h:30mm

Lens:12mm

Nut

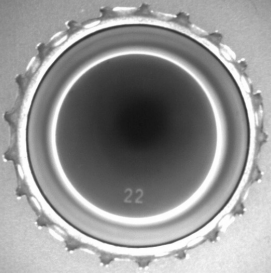


Camera h:130mm

Light h:30mm

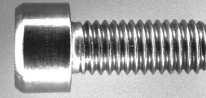
Lens:12mm

Cap



Camera h:130mm

Light h:30mm



Dumlupınar Mahallesi, Pelin Sok. Nuhoglu 2.  
Etap B Blok No:51 D16-19 Kadıköy / İstanbul

E-Mail: [info@ludre.com.tr](mailto:info@ludre.com.tr)  
Contact: +90 216 519 08 54



# Prion Industrial Lighting

## Dark Field Lights

## Low Angle Lights

## DFL150-15

Lens:12mm

Terminal



Camera h:130mm

Light h:30mm

Lens:12mm

Can

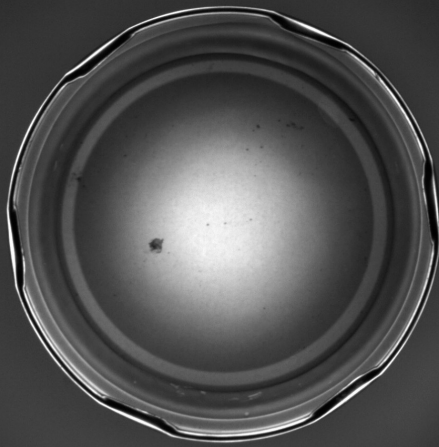


Camera h:230mm

Light h:40mm

Lens:12mm

Cap



Camera h:170mm

Light h:40mm

Lens:12mm

Toy



Camera h:170mm

Light h:40mm



Dumlupınar Mahallesi, Pelin Sok. Nuhoglu 2.  
Etap B Blok No:51 D16-19 Kadıköy / İstanbul

E-Mail: [info@ludre.com.tr](mailto:info@ludre.com.tr)  
Contact: +90 216 519 08 54





# Prion Industrial Lighting

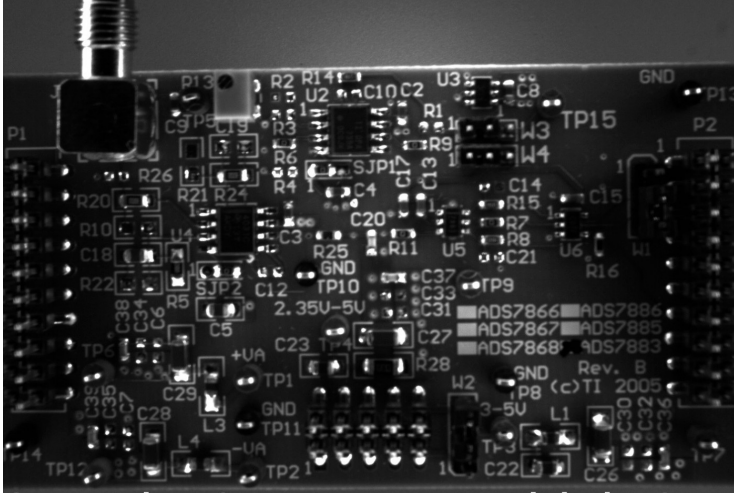
## Dark Field Lights

## Low Angle Lights

DFL150-15

Lens:12mm

Pcb

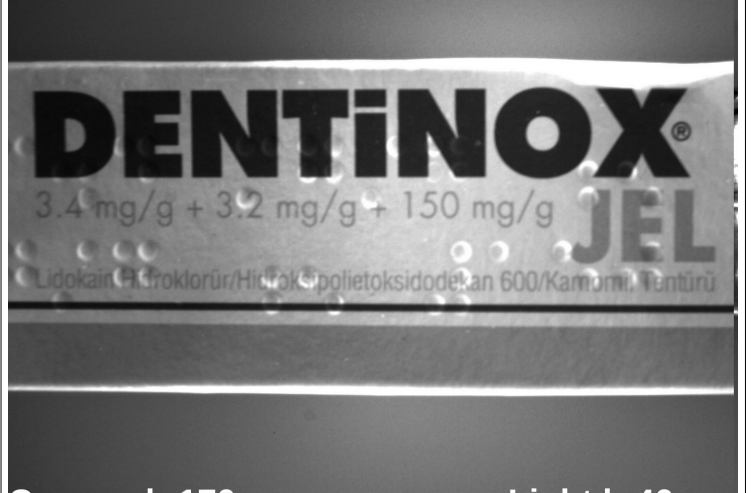


Camera h:170mm

Light h:40mm

Lens:12mm

Box

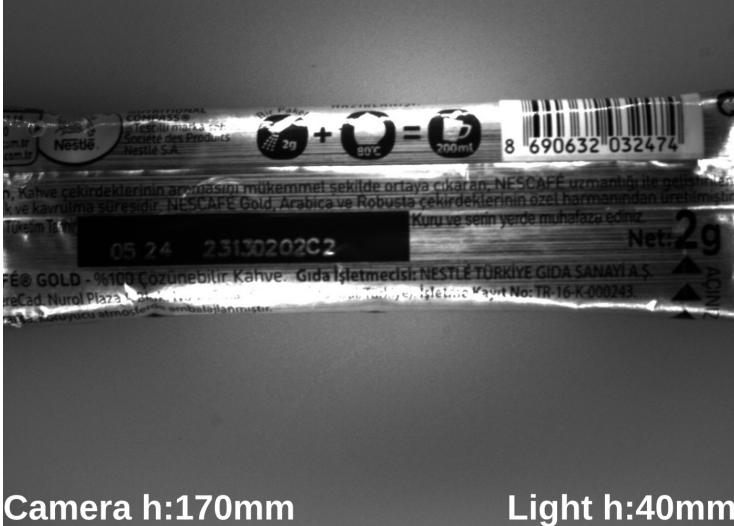


Camera h:170mm

Light h:40mm

Lens:12mm

Packaging



Camera h:170mm

Light h:40mm

Lens:12mm

Packaging



Camera h:230mm

Light h:60mm



Dumlupınar Mahallesi, Pelin Sok. Nuhoglu 2.  
Etap B Blok No:51 D16-19 Kadıköy / İstanbul

E-Mail: [info@ludre.com.tr](mailto:info@ludre.com.tr)  
Contact: +90 216 519 08 54



# Prion Industrial Lighting

## Dark Field Lights

### Low Angle Lights

DFL150-15

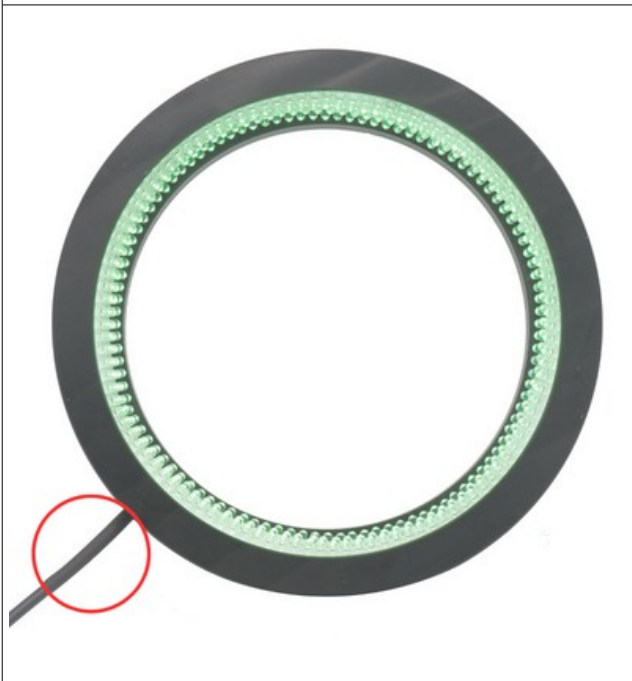
#### 5.PRODUCT USE



Mounting to the machines is possible with the bolt and nut assembly in the areas indicated in the adjacent image.

The points to be taken into consideration during this installation are as follows: The electronic parts should not be contacted while assembling the product.

In addition, if the product is not installed properly, vibrations that may occur will cause errors during measurement and control.



The product is powered by a 2M long cable fixed on it.

We need to make the 24V DC+ connection from our cable line with a red stripe, and we need to make the GND connection from our single color cable line.

When the supplies are connected in reverse, the product will not be damaged, but the product will not work. Cuts, breaks, etc. on the cable. If there is a problem, please contact us before using the product.





# Prion Industrial Lighting

## Dark Field Lights

### Low Angle Lights

DFL150-15

#### 6.DIMENSIONS

DFL150-15

