

Product Name	Dimensions	Number	Statement
K3224	Widht: 275 mm	1	Lighting Zone
	Heigh: 55 mm	2	Camera Field of View
	Lenght: 275 mm	3	Product Cable



### 1.FEATURES

- Lighting Color: 6000K, Green, Red
- Lighting Angle: 30°, 60°
- Illumination Intensity: 1.92 k lm
- Number of Leds: 768
- Input Voltage: 24 V
- Input Current (15  $\mu$ s): 2,4 A
- Input Current (1 second): 1,5 A
- Input Current (1 minute): 1,2 A
- Input Current (continuous): 0,96 A
- Dimensions: 27.5 cm x 27.5 cm x 5.5 cm
- Constant Voltage Usage: Yes
- Diffuser Option: Yes

### 3.APPLICATIONS

- Engine Part Inspections
- Packaging Inspections
- Medical Bottle Inspections
- Food Package Inspections
- Surface Inspections
- Microscopic Camera Applications
- Particle Imaging in Liquid
- Particle Size Measurement
- Particle Counting
- Machine Vision
- Cell Identification
- Flame Length Measurement
- Edge Detection
- Material Strain Measurement (elongation / shortening / degradation)
- Motion Detection
- Product Counting
- Color Concentration Information
- Coordinate Information

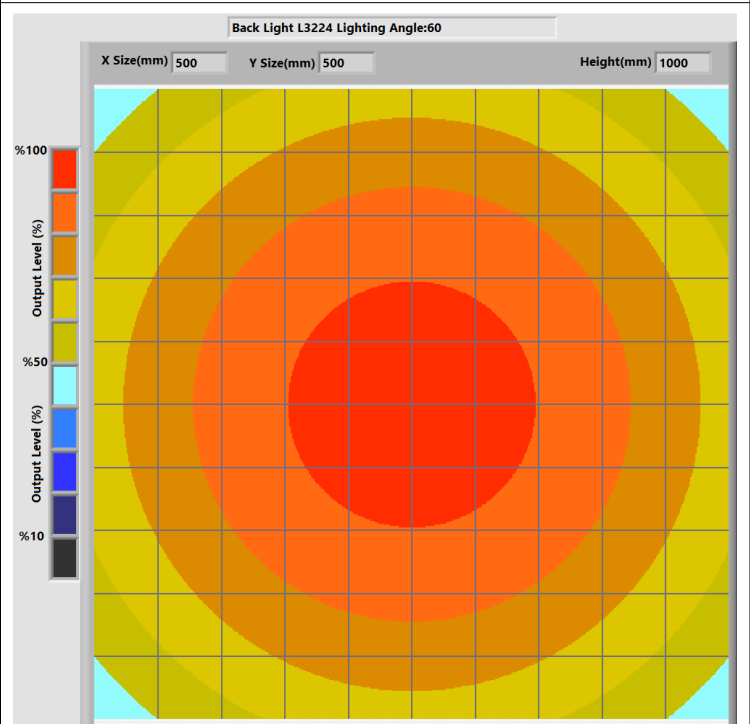
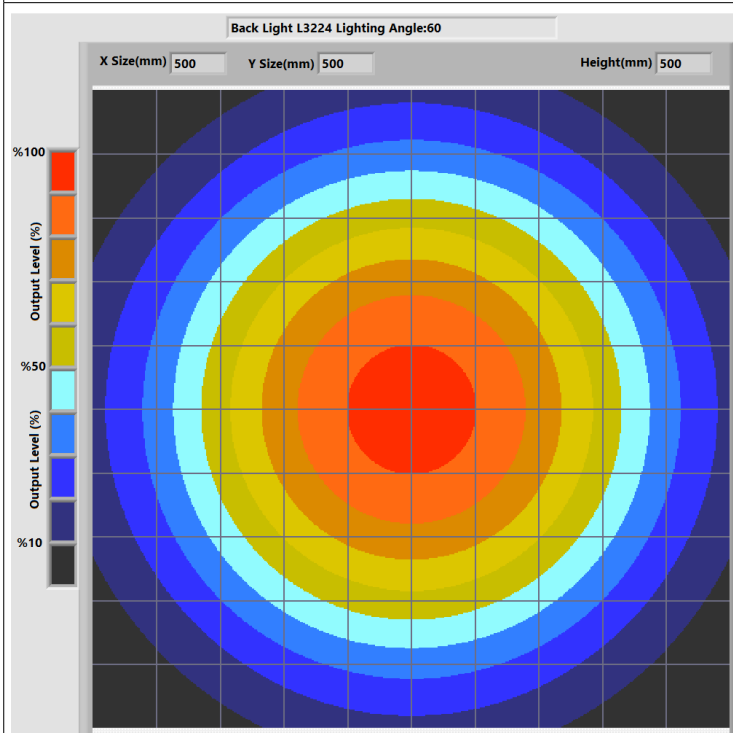
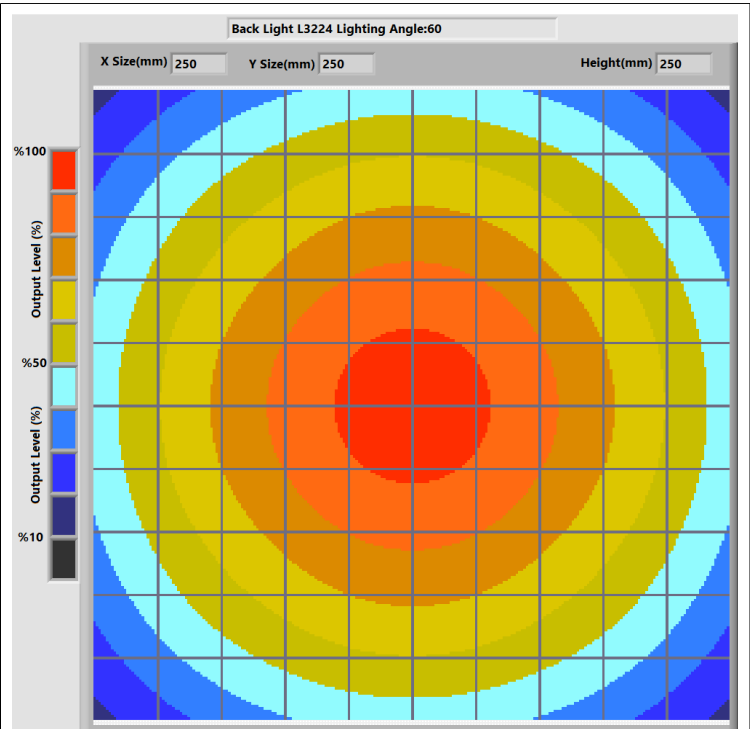
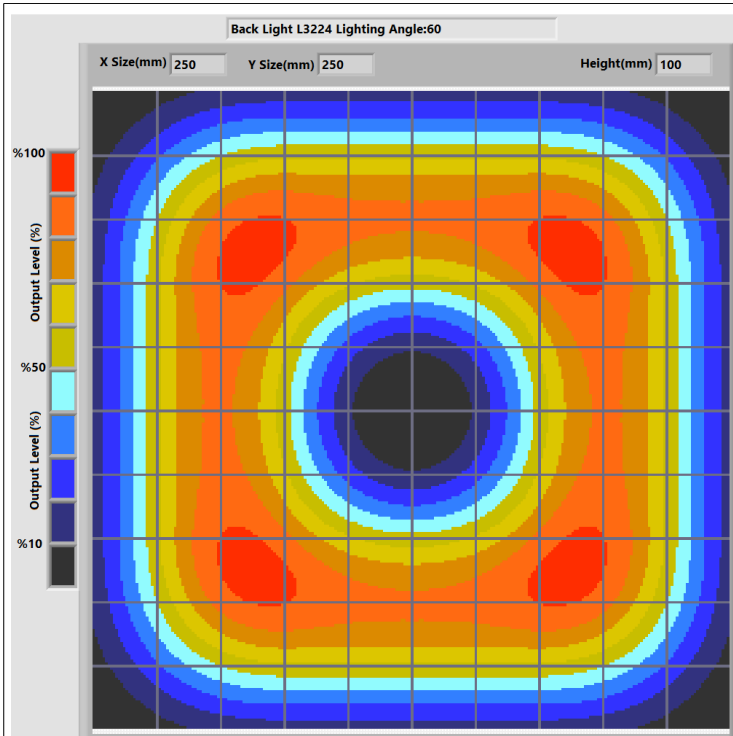
### 2.DESCRPTIONS

- Backlighting is a crucial and widely employed technique in image processing projects, offering various advantages across different applications.

- Particle Identification
- Cell Imaging
- Machine Monitoring
- Image Processing
- Industrial Led Lighting
- Conveyor Line Lighting
- Robot Vision Applications
- Industry 4.0 Applications
- Machine Lighting
- Bar Light
- Dark Field Light
- Panel Lighting
- Dark Effect Lighting
- Dome Light
- Ring Light
- Panel Light
- Back Light
- Dome Type
- Lighting



### 4.LIGHT CHARACTERISTICS

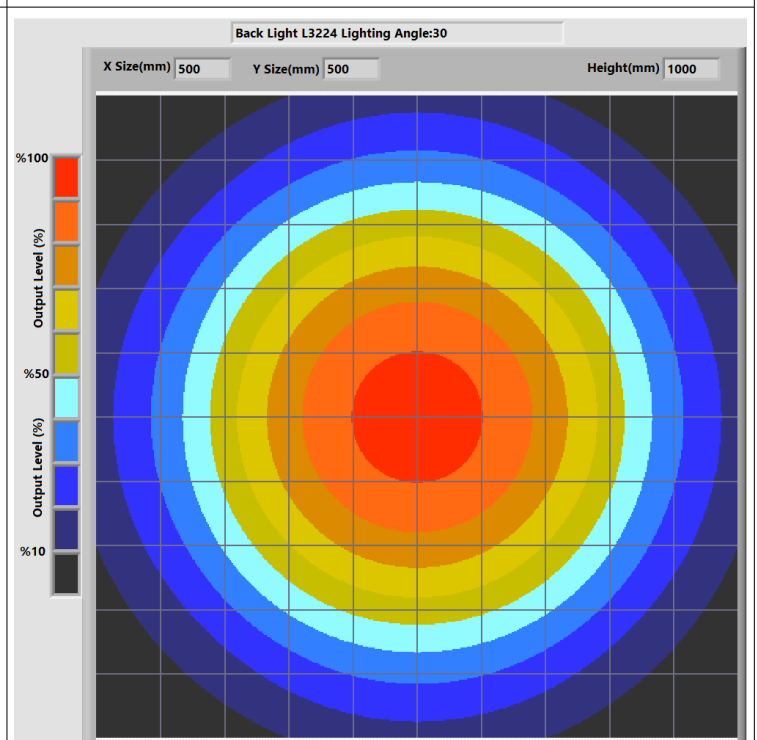
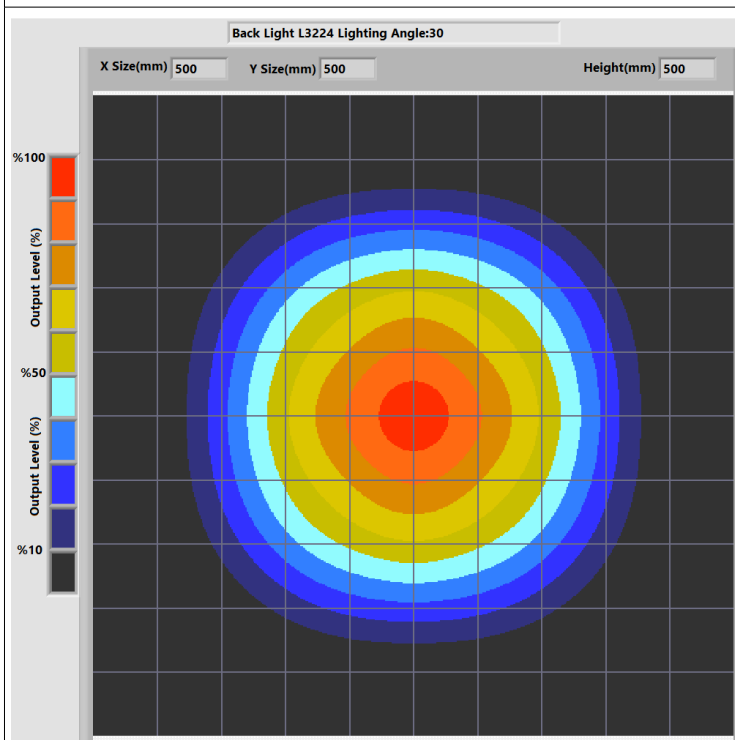
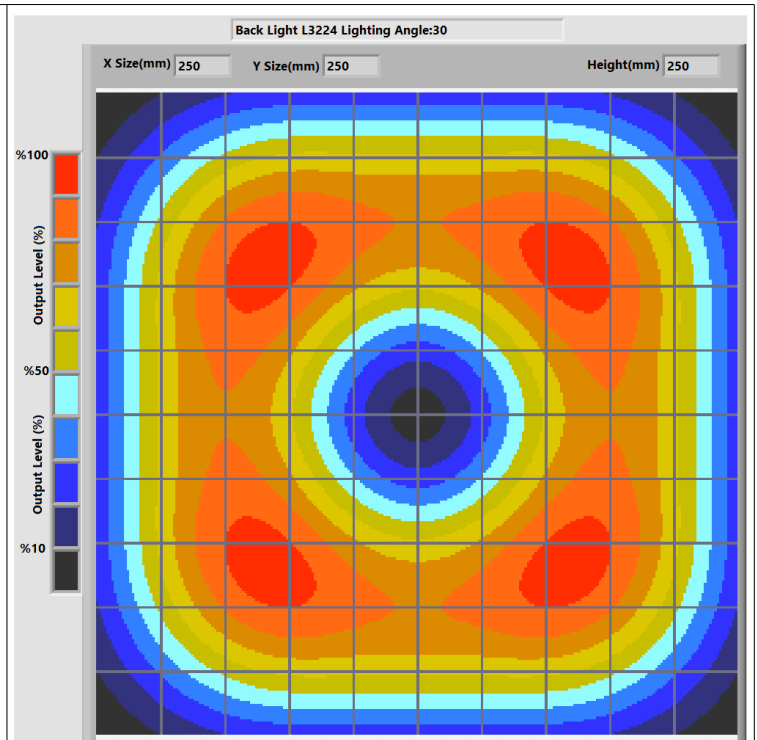
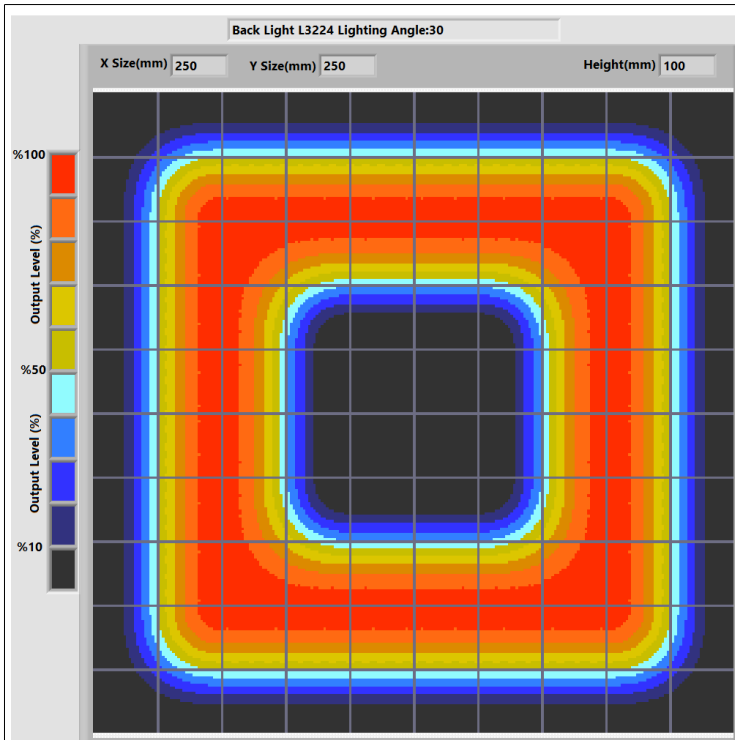




# Prion Industrial Lighting

## Back Light

K3224



Pelin Street, Nuhoglu Stage 2  
Kadikoy/Istanbul/Turkey

E-Mail: [info@ludre.com.tr](mailto:info@ludre.com.tr)  
Contact: +90 216 519 08 54



# Prion Industrial Lighting

## Back Light

K3224

Lens:12mm

Money

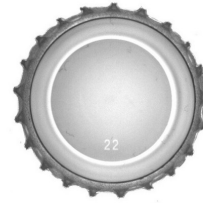


Camera h:170mm

Light h:160mm

Lens:12mm

Cap



Camera h:170mm

Light h:160mm

Lens:12mm

Nut



Camera h:170mm

Light h:160mm

Lens:12mm

Bolt



Camera h:170mm

Light h:160mm







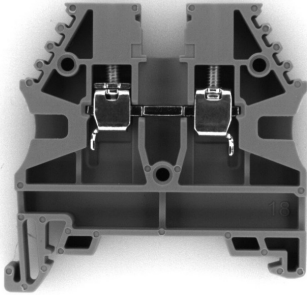
# Prion Industrial Lighting

## Back Light

K3224

Lens:12mm

Terminal



Camera h:170mm

Light h:160mm

Lens:12mm

Can



Camera h:230mm

Light h:160mm

Lens:12mm

Cap

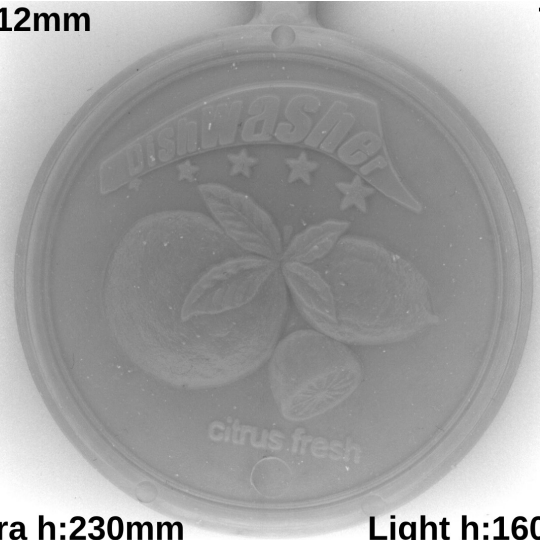


Camera h:230mm

Light h:160mm

Lens:12mm

Toy



Camera h:230mm

Light h:160mm





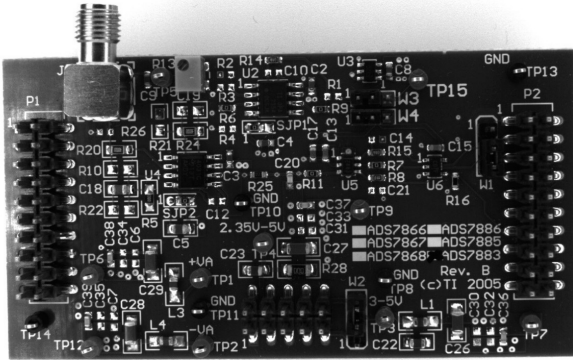
# Prion Industrial Lighting

## Back Light

K3224

Lens:12mm

Pcb



Camera h:230mm

Light h:160mm

Lens:12mm

Package

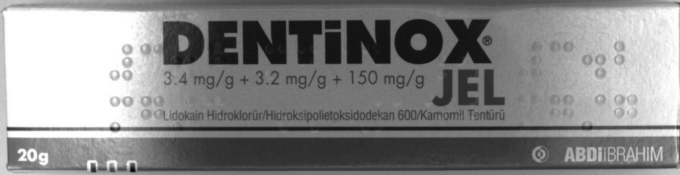


Camera h:230mm

Light h:160mm

Lens:12mm

Box



Camera h:230mm

Light h:160mm

Lens:12mm

Package



Camera h:230mm

Light h:160mm



Pelin Street, Nuhoglu Stage 2  
Kadikoy/Istanbul/Turkey

E-Mail: [info@ludre.com.tr](mailto:info@ludre.com.tr)  
Contact: +90 216 519 08 54

### 5.PRODUCT USE



In the product shown in the image, connection is provided with the bolt and nut assembly through the channels of the sigma profile marked in red. One of the things you should pay attention to during connection is whether the installation is done properly. In installations that are not made properly, vibration may occur during operation and unwanted situations may occur in your camera images.



The product is powered by a 2M long cable fixed on it. We need to make the 24V DC+ connection from our cable line with a red stripe, and we need to make the GND connection from our single color cable line. When the supplies are connected in reverse, the product will not be damaged, but the product will not work. Cuts, breaks, etc. on the cable. If there is a problem, please contact us before using the product.



### 6.DIMENSIONS

K3224

